

## Manager, Petroleum Engineering - London

### Company

Sasol Petroleum International (SPI) is the E&P division of Sasol, one of the top 50 global energy companies. SPI has operations in Mozambique and Papua New Guinea and interests in South Africa, West Africa, and Australia.

SPI's strategic focus is exploration and monetisation of stranded gas. Its current equity production is 40,000 boepd and it is in the middle of an expansion project to increase production to 55,000 boepd by 2011. The company strategy is to achieve 150,000 boepd by 2025.

### Department

The Technical Services function of SPI consists of Petroleum Engineering, Geoscience, Projects & Engineering, and Value Assurance and is made up of a team of 35 professionals, split between Johannesburg and London. The department is headed by General Manager of Technical Services, who sits on the Executive Committee of SPI and reports directly to the Managing Director.

The role of Technical Services is to ensure that SPI's strategic, tactical and operational decisions are well founded on sound technical study and analysis in line with good oilfield practice. This is achieved by maintaining a well-resourced function of skilled staff provided with the necessary technology and applying appropriate practices and processes.

### Position Summary

To ensure provision of high quality petroleum engineering support to the exploration, appraisal, development and reservoir management of the Company assets. To develop and maintain functional processes, standards and procedures. To recruit, coach, develop and retain SPI staff petroleum engineers.

### Job Requirements

#### Qualifications and Capabilities

- Bachelor degree in a strongly mathematical or physics-oriented subject is required.
- MSc or PhD in petroleum engineering is desirable.
- Fluency in written and spoken use of the English language is required. Knowledge of other languages would be an advantage.
- Current and up to date software capability using office and collaborative applications is required.
- Excellent written and spoken communication skills are required.
- Desire and ability to inspire, coach and develop technical staff is required.
- Ability to work alone under own initiative, or in close collaboration with other managers, geoscientists, and reservoir engineers as part of a team is required.
- Ability to perform analysis, interpretation and problem solving at all levels of complexity with varying volumes of data is required.
- Ability to manage a geographically dispersed virtual team is required. This will include the recognition of the need for regular inter-continental travel.
- Understanding of and willingness to work in a matrix organisation is required
- Understanding of the importance of Sasol Values and other Sasol Group working policies is required

## **Specific Expertise and Experience**

- Experience in the analysis of petroleum engineering data for the exploration, appraisal, development and operation of petroleum reservoirs is required.
- Expertise in well test analysis, nodal analysis, material balance analysis and production monitoring techniques is required.
- Strong expertise in the construction, running, history-matching and prediction running of reservoir simulation models, together with the incorporation of geological models, is required
- Understanding of the planning and interpretation of routine and special core analysis is required
- Understanding of the planning and interpretation of PVT analysis is required
- Understanding of the interpretation of modern open-hole and cased-hole logs is desirable.
- Current capability with reservoir engineering interpretation and modelling software is required. Eclipse, OFM, GEM/IMEX, Saphir, Petroleum Expert IPM suite and Petrel expertise is desirable.
- Experience in well log data management, petrophysical estimation of rock parameters (porosity, permeability, fluid phase saturation), core sampling, testing procedures, and analysis, planning, selection, and specification of well logging procedures is desirable.
- Experience in application of statistical methods for rock parameter distribution, stochastic volumetric estimation, field development planning and economic valuation is desirable.
- Experience in reservoir development studies and field development planning is required.
- Experience in well and well test design, detailed planning and operational guidance is required.
- Study and operational experience of gas and gas condensate field appraisal, development and operation is desirable.
- Study and operational experience in both sandstone and carbonate environments would be an advantage.
- Experience in CO2 EOR screening and modelling or carbon sequestration modelling would be an advantage.
- Experience of unconventional resources (coal bed methane, shale gas, tight gas sands) operations and studies would be an advantage.
- Experience with resources estimation methodology is required and knowledge of SPE-PRMS in particular is desirable.
- Experience in managing of teams is required.
- Experience of participating in data room evaluations is desirable.
- Experience in partnership/JV operations would be an advantage

## **Required Outputs: Functional (The core content and deliverables of the position)**

- Allocate petroleum engineers to work for Assets or on tasks as required. This will include input into acreage evaluation, prospect evaluation, well proposals, reservoir development studies and field development plans.
- Supervise, manage and maintain functional leadership of all petroleum engineers wherever they are based.
- Ensure appropriate management of petroleum engineering technical work carried out by contractors.
- Ensure high standards of quality of all petroleum engineering studies. Set petroleum engineering policies, standards and guidelines to ensure consistent quality.
- Manage the Petroleum Engineering functional budget. This budget provides funding for training, conferences, business travel, consultancy services, technical software, and other minor costs within the scope of the Petroleum Engineering function that are not directly required by an approved project.
- Perform technical work as a petroleum engineer as required.
- Maintain an overview of all petroleum engineering issues in all SPI reservoirs.
- For each project, ensure that petroleum engineering documentation is created and maintained for each activity as required by SPI's business process model.
- Represent SPI interests in external dealings with contractors, partners, governments and other parties as required.

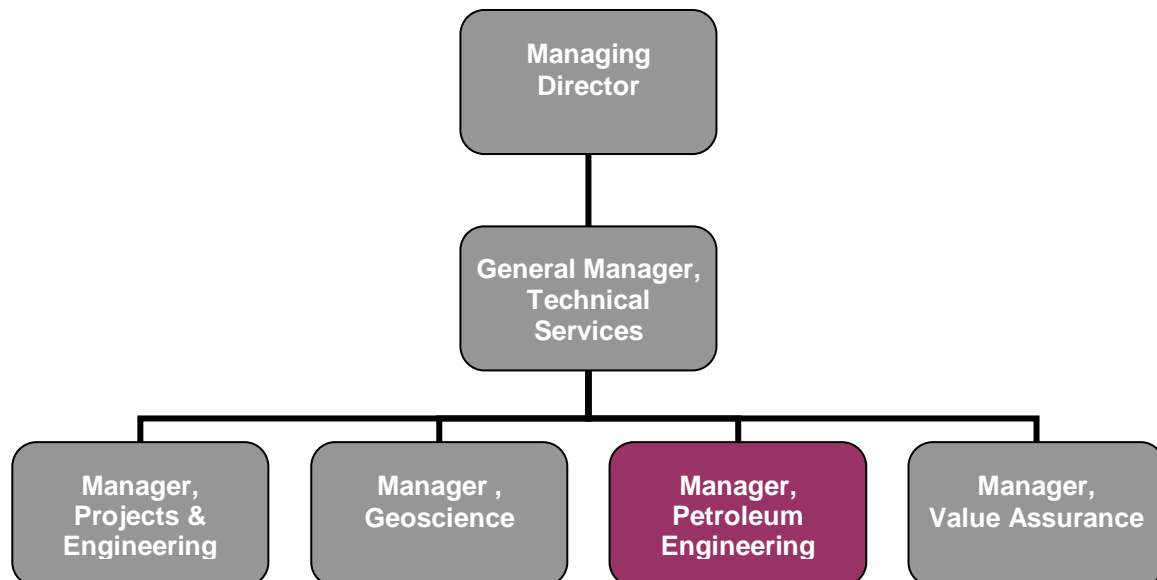
**Required Outputs: General (Overall objectives/Key Areas of Performance)**

- Ensure that the highest standards of collaborative support are provided to the Asset/Exploration Managers for SPI projects as required from time to time
- Represent SPI interests in external dealing with contractors, consultants and industry forums
- Support SPI interests on joint projects – influence the operator in non-operated situations
- Report to Manager, Geoscience on functional geoscience matters

**Person Attributes: Competencies (Skills, Knowledge and Characteristics – Critical / Desirable)**

Competency	Must	Wish	Weight 1-10
Expert technical and analytical (petroleum engineering) skills	X		10
High technical and personal work standards	X		10
Technical report writing and presentation skills	X		10
Team working (virtual), collaboration and interpersonal skills	X		8
Ability to work on own initiative	X		8
Setting goals and achieving them		X	6
Meeting deadlines and targets	X		8
Ability to work with varying volumes of data		X	7
Ability to work at all levels of complexity		X	7
Embracing new ideas/strategies/technologies	X		8
Flexibility to adapt to changes	X		8
Innovation and creativity		X	7
Communication and influencing skills	X		8
Management, Leadership & Development of others	X		10
Motivating others to achieve targets	X		10
Project Management Skills		X	6
Managing diverse groups		X	8
Willingness to travel		X	8

**Organisational Structure/Position**



For further information and a confidential discussion please contact Damien McCawley at Simpson Crowden LLP on +44(0)207 016 9768.

To apply please visit our website: [www.simpsoncrowden.com/sasol](http://www.simpsoncrowden.com/sasol) and follow the links, or email your CV and covering letter to [sasol@simpsoncrowden.com](mailto:sasol@simpsoncrowden.com) quoting reference **R174**.

## SIMPSON CROWDEN LLP

---

Search for Energy