

Senior Reservoir Engineer Rosebank, Johannesburg

Company

Sasol Petroleum International (SPI) is the E&P division of Sasol, one of the top 50 global energy companies. SPI has operations in Mozambique and Papua New Guinea and interests in South Africa, West Africa, and Australia.

SPI's strategic focus is exploration and monetisation of stranded gas. Its current equity production is 40,000 boepd and it is in the middle of an expansion project to increase production to 55,000 boepd by 2011. The company strategy is to achieve 150,000 boepd by 2025.

Department

The Technical Services function of SPI consists of Petroleum Engineering, Geoscience, Projects & Engineering, and Value Assurance and is made up of a team of 35 professionals, split between Johannesburg and London. The department is headed by General Manager of Technical Services, who sits on the Executive Committee of SPI and reports directly to the Managing Director.

The role of Technical Services is to ensure that SPI's strategic, tactical and operational decisions are well founded on sound technical study and analysis in line with good oilfield practice. This is achieved by maintaining a well-resourced function of skilled staff provided with the necessary technology and applying appropriate practices and processes.

Position Summary

To provide high quality reservoir engineering support to the exploration, appraisal, development and reservoir management of the Company assets as assigned by the Manager, Petroleum Engineering from time to time. The incumbent will also be required to assist with new business development activities, functional initiatives, training and supervision of junior members of the group and managing technical work carried out by specialist consultancies.

Job Requirements

Qualifications and Capabilities

- Bachelor degree in a strongly mathematical or physics-oriented subject is required.
- MSc or PhD in petroleum engineering or reservoir engineering is desirable.
- Fluency in written and spoken use of the English language is required. Knowledge of other languages would be an advantage.
- Current and up to date software capability using office and collaborative applications is required.
- Excellent written and spoken communication skills are required.
- Ability to work alone under own initiative, or in close collaboration with geoscientists, facilities engineers and other reservoir engineers as part of a team is required.
- Ability to perform analysis, interpretation and problem solving at all levels of complexity with varying volumes of data is required.
- Ability to work in a geographically dispersed virtual team is required. This will include the recognition of the need for regular inter-continental travel.
- Understanding of and willingness to work in a matrix organisation is required
- Understanding of the importance of Sasol Values and other Sasol Group working policies is required

Specific Expertise and Experience

- Expertise in well test analysis, nodal analysis, material balance analysis and production monitoring techniques is required.
- Strong expertise in the construction, running, history-matching and prediction running of reservoir simulation models, together with the incorporation of geological models, is required
- Understanding of the planning and interpretation of routine and special core analysis is desirable
- Understanding of the planning and interpretation of PVT analysis is desirable
- Understanding of the interpretation of modern open-hole and cased-hole logs would be an advantage.
- Current capability with reservoir engineering interpretation and modelling software is required. Eclipse, OFM, GEM/IMEX, Saphir, Petroleum Expert IPM suite and Petrel expertise is desirable.
- Experience in application of statistical methods for rock parameter distribution, stochastic volumetric estimation, field development planning and economic valuation would be an advantage.
- Experience of working in the exploration and exploitation of oil and gas assets is required
- Experience in reservoir development studies and field development planning is required
- Experience in well and well test design, detailed planning and operational guidance is desirable..
- Study and operational experience of gas and gas condensate field appraisal, development and operation is desirable.
- Study and operational experience in both sandstone and carbonate environments would be an advantage.
- Experience in CO2 EOR screening and modelling or carbon sequestration modelling would be an advantage.
- Experience of unconventional resources (coal bed methane, shale gas, tight gas sands) operations and studies would be an advantage.
- Experience with resources estimation methodology is required and knowledge of SPE-PRMS in particular is desirable.
- Experience of participating in data room evaluations is desirable.
- Experience in partnership/JV operations would be an advantage

Required Outputs: Functional (The core content and deliverables of the position)

- Provide consistent, detailed and integrated reservoir engineering interpretations for operated and non-operated fields
- Construct dynamic reservoir simulation models at the appropriate level of detail.
- Provide reservoir engineering input into SPI's Resource Statement and Prospect Inventory as appropriate
- Provide sound reservoir engineering input during the multi-discipline well planning process to ensure a safe, optimal and cost effective data acquisition and drilling programme fulfilling all objectives.
- Carry out studies and provide reservoir engineering input into acreage evaluation, prospect evaluation, well proposals, reservoir development studies and field development plans

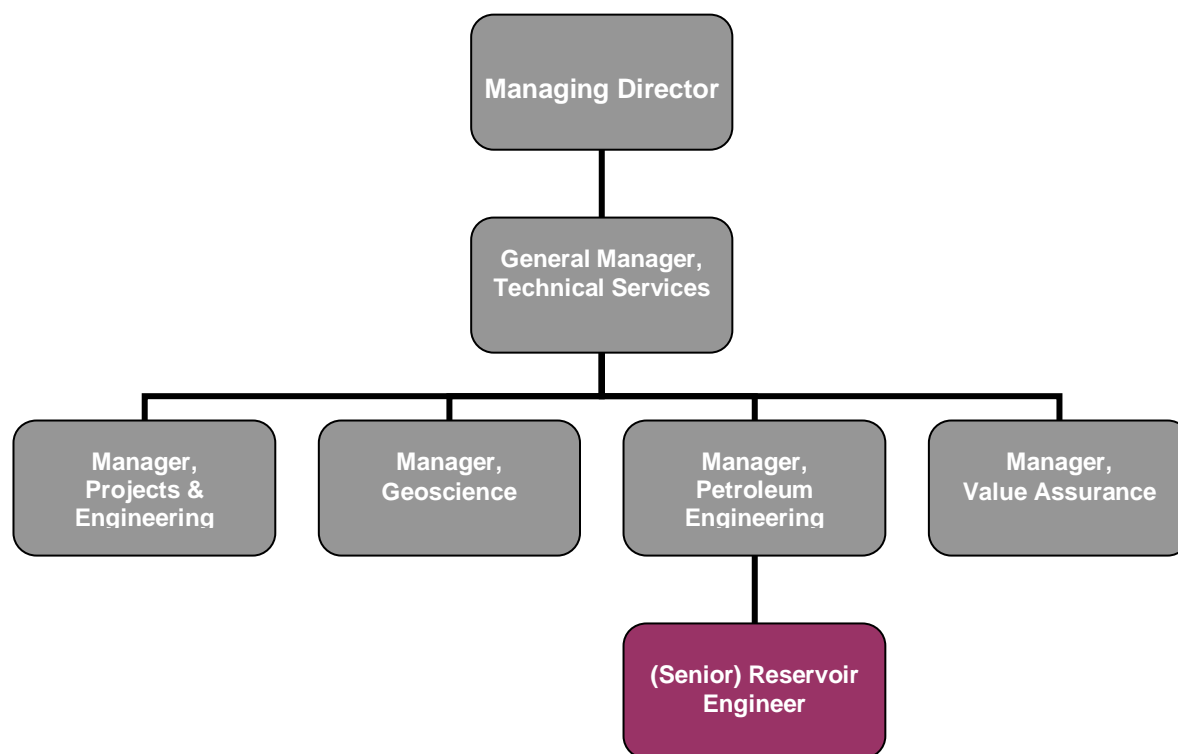
Required Outputs: General (Overall objectives/Key Areas of Performance)

- Provide highest standards of collaborative support to the Asset/Exploration Managers for SPI projects as required from time to time
- Represent SPI interests in external dealing with contractors, consultants and industry forums
- Support SPI interests on joint projects – influence the operator in non-operated situations
- Report to Manager, Petroleum Engineering on functional reservoir engineering matters

Person Attributes: Competencies (Skills, Knowledge and Characteristics – Critical / Desirable)

Competency	Must	Wish	Weight 1-10
Expert technical and analytical (reservoir engineering) skills	X		10
High technical and personal work standards	X		10
Technical report writing and presentation skills	X		8
Team working (virtual), collaboration and interpersonal skills	X		8
Ability to work on own initiative	X		8
Setting goals and achieving them	X		8
Meeting deadlines and targets	X		8
Ability to work with varying volumes of data		X	7
Ability to work at all levels of complexity		X	7
Embracing new ideas/strategies/technologies		X	6
Flexibility to adapt to changes		X	6
Innovation and creativity		X	5
Communication and influencing skills		X	6
Management, Leadership & Development of others		X	3
Motivating others to achieve targets		X	3
Project Management Skills		X	3
Managing diverse groups		X	3
Willingness to travel		X	7

Organisational Structure/Position



For further information and a confidential discussion please contact Liz Gardner at Simpson Crowden LLP on +44(0)7801 711372.

To apply please visit our website: www.simpsoncrowden.com/sasol and follow the links, or email your CV and covering letter to sasol@simpsoncrowden.com quoting reference **R182**.

SIMPSON CROWDEN LLP

Search for Energy