



Project Manager, CO₂ Storage (China)

Company

Sasol Petroleum International (SPI) is the E&P division of Sasol, one of the top 50 global energy companies. SPI has operations in Mozambique and Papua New Guinea and interests in South Africa, West Africa, and Australia. It is also exploring opportunities in China, India and USA with respect to CO₂ storage.

SPI's strategic focus is exploration and monetisation of stranded gas. Its current equity production is 40,000 boepd and it is in the middle of an expansion project to increase production to 55,000 boepd by 2011. The company strategy is to achieve 150,000 boepd by 2025.

Department

The Technical Services function of SPI consists of Petroleum Engineering, Geosciences, Projects & Engineering and Value Assurance and is made up of a team of 35 professionals, located in Johannesburg and London. The department is headed by General Manager of Technical Services, who sits on the Executive Committee of SPI and reports directly to the Managing Director.

The role of Technical Services is to ensure that SPI's strategic, tactical and operational decisions are well founded on sound technical analysis in line with good oilfield practice. It is also responsible for the engineering and execution of capital projects. This is achieved by maintaining a well-resourced function of skilled staff provided with the necessary technology and applying appropriate practices and processes.

Unconventional Resources Assets

Sasol is the global leader of Coal-to-Liquids (CTL) technology, with world-scale operations and over 50 years experience in this field. It believes that Carbon Capture and Storage (CCS) is a significant enabling technology for its CTL projects and in recognition of this, Sasol's board has given SPI the mandate to pursue CO₂ storage projects in support of its CTL ambitions.

The CO₂ storage studies and projects are conducted by SPI's Unconventional Resources (UR) group. The UR group was established in 2007 and has three key objectives:

- a) Develop a gas resource base for Sasol through exploration or acquisition of CBM or Shale Gas;
- b) Geological storage of CO₂;
- c) Enhanced oil or gas recovery of depleted fields, utilising CO₂ injection.

Sasol is presently investigating the potential for geological storage in many of the areas where new CTL ventures are under investigation, such as China, India and USA. The objective the CO₂ storage projects in each location is to dispose 800 MMSCFD of CO₂ over a period of 30 years.

Position Summary

Reporting to the UR Portfolio Manager, the Project Manager (PM) will be responsible for all stages of project development, from conceptual studies through to front-end and detailed engineering. Specifically, the PM will have overall accountability for the definition, planning, costs, contracts and delivery of Sasol's CO₂ storage projects in China. The incumbent will be required to integrate the expertise within Sasol with various G&G, Drilling and Engineering consultancy firms.

Job Requirements

Qualifications and Capabilities

- Bachelor degree in relevant Engineering subject
- MSc in Chemical, Mechanical or Petroleum Engineering subject is desirable
- Track record of managing engineering and capital projects Delivery of engineering and capital projects within the upstream (E&P) oil and gas industry
- Demonstrate project execution to highest standards of safety, environmental impact and health
- Willingness to be based in China at appropriate project stage
- Current and up-to-date software capability using office and collaborative applications
- Ability to work in a geographically dispersed virtual team is required. This will include the recognition of the need for regular inter-continental travel
- Understanding of and willingness to work in a matrix organisation
- Fluency in written and spoken use of the English language is required. Knowledge of other languages would be advantageous

Specific Expertise and Experience

- Minimum of 12 years relevant industry experience
- Proven track record in engineering and construction phases from conceptual through to FEED, EPC and start-up stages
- Chinese-based projects or working in China
- Enhanced Oil Recovery (EOR) through CO₂, Gas or Water Injection
- Hydrocarbon or sour gas in gas injection or geological storage operations
- Working in the exploration and exploitation of oil and gas assets
- Cost, schedule and quality control
- Contracts management
- Stage-gate project management systems
- Sour gas (CO₂ or H₂S) capture, transportation or storage
- Cost estimation (Capital and Operating)
- Risk Management
- Experience of unconventional resources (coal bed methane, shale gas, tight gas sands) would be advantageous
- Experience in working within partnership/JV operations would be advantageous
- Working knowledge of Coal-to-Liquids (CTL) or Gas-to-Liquids (GTL) will be advantageous

Required Outputs: Functional (The core content and deliverables of the position)

- Accept responsibility for the successful completion of projects within the agreed scope, schedule, cost and quality requirements
- Follow Sasol's stage-gate project management system (BDI)
- Manage project risks by identifying and quantifying risks and capturing mitigation measures in a risk register
- Prepare contracting strategy appropriate for the particular project phase
- Compile scope and tender documents from various discipline inputs, obtaining agreement from stakeholders and managing the scope actively
- Manage multi-functional/cultural engineering teams
- Prepare and deliver presentations to SPI Management and Venture Partners to aid understanding and achieve acceptance of development plans

Required Outputs: General (Overall objectives/Key Areas of Performance)

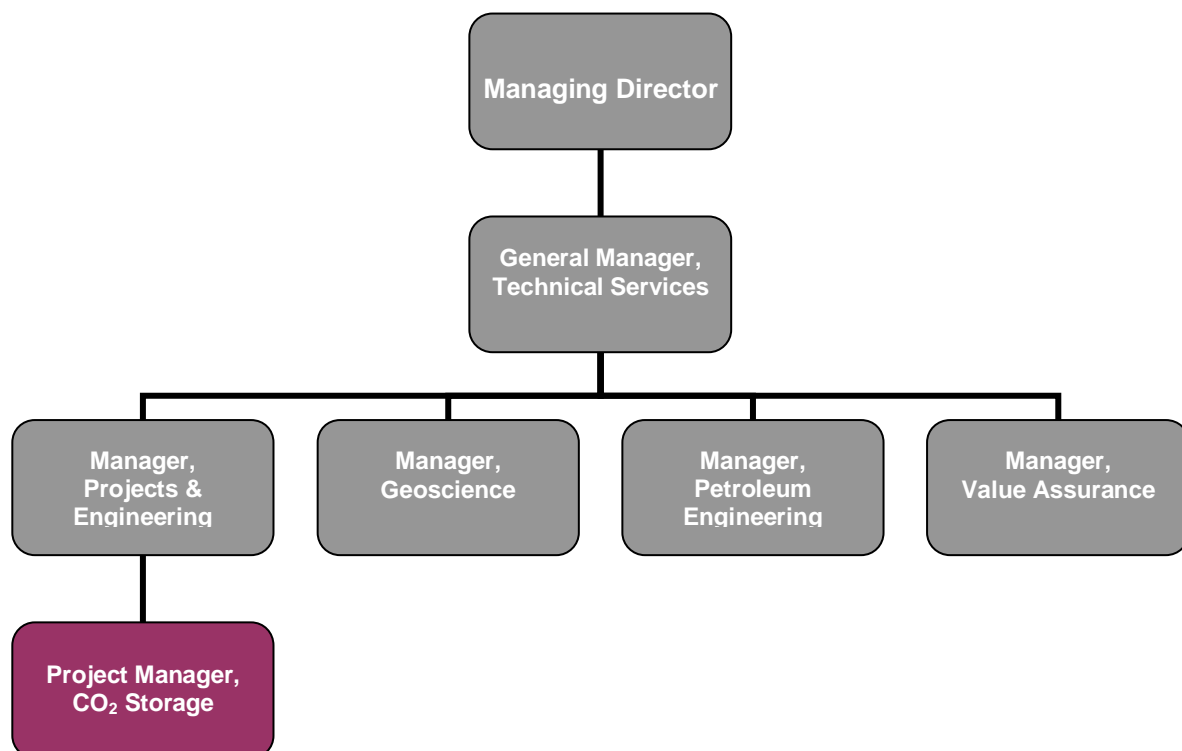
- Deliver Sasol's CO₂ projects in China within budget, on time and to the agreed quality
- Ensure safety, environmental and health aspects of the projects meets Sasol's standards

- Manage SPI interests in external dealing with contractors, consultants and engineering companies
- Resourcing of project team with internal and external personnel
- Focal point for internal and external stakeholders, e.g. Joint Venture partners, Sasol management, regulatory bodies and government/ public consultations
- Deliver schedule and cost estimate to the required accuracy for the project phase
- Provide project execution plans
- Report to a) Manager, Projects & Engineering and b) UR Portfolio Manager

Person Attributes: Competencies (Skills, Knowledge and Characteristics – Critical / Desirable)

Competency	Must	Wish	Weight 1-10
Management, Leadership & Development of others	X		8
Pro-active, creative and hands-on approach to challenges	X		8
Communication and influencing skills	X		8
Project Management Skills (schedule, cost, quality, contracts)	X		10
Managing diverse groups	X		8
Ability to work at all levels of complexity	X		8
Embracing new ideas/strategies/technologies		X	5
Flexibility to adapt to changes		X	5
Innovation and creativity		X	5
Motivating others to achieve targets	X		8
Ability to work on own initiative	X		8
Meeting deadlines and targets	X		10
Business Acumen		X	5
Willingness to travel	X		10

Organisational Structure/Position



For further information and a confidential discussion please contact Liz Gardner at Simpson Crowden LLP on +44(0)207 016 9768.

To apply please visit our website: www.simpsoncrowden.com/sasol and follow the links, or email your CV and covering letter to gardner@simpsoncrowden.com quoting reference **R188**.

SIMPSON CROWDEN LLP

Search for Energy